

## FEATURES AND SPECIFICATIONS

### Features and Benefits

- Sizes 4 to 20 circuits
- Locating peg version standard
- Very low profile height 2.15mm
- End-to-end stackable
- Optional without peg version
- Contact Molex for pick-and-place cap or embossed tape

### Reference Information

Product Specification: PS-87340  
 Packaging: Tube  
 UL File No.: E29179  
 CSA File No.: LR19980  
 Mates With: 0.50mm square pin headers  
 Designed In: Millimeters

### Electrical

Voltage: 125V  
 Current: 1.0A  
 Contact Resistance: 15mΩ max.  
 Dielectric Withstanding Voltage: 1000V  
 Insulation Resistance: 1000 MΩ min.

### Mechanical

Contact Insertion Force: 180g max.  
 Contact Retention to Housing: 0.32kg min.  
 Normal Force: 50g min.

### Physical

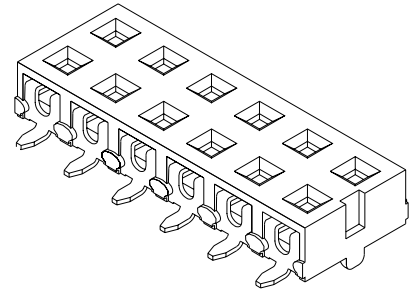
Housing: Black LCP, UL 94V-0  
 Contact: Phosphor Bronze  
 Plating: See Table  
 Operating Temperature: -55 to +105°C

# molex®

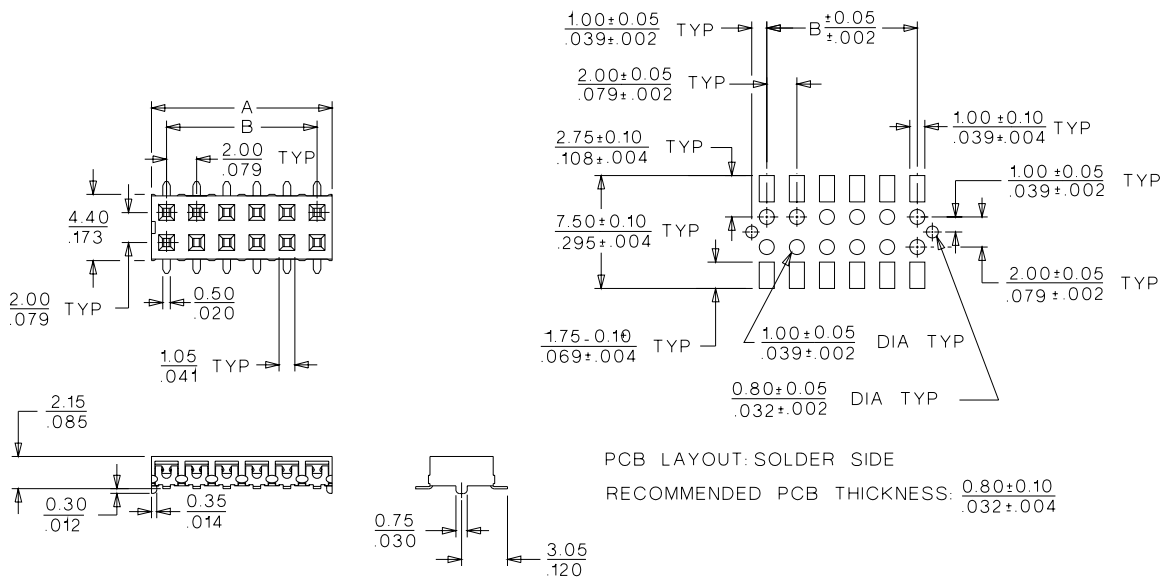
**2.00mm (.079") Pitch  
 Milli-Grid™  
 Receptacle**

## 87340

## Top Entry SMT (VLPR2)



## CATALOG DRAWING (FOR REFERENCE ONLY)



## ORDERING INFORMATION AND DIMENSIONS

Circuits	Order No.		Dimension	
	15μ" Select Gold	30μ" Select Gold	A	B
4	87340-0422	87340-0421	4.00 (.157)	2.00 (.079)
6	87340-0622	87340-0621	6.00 (.236)	4.00 (.157)
8	87340-0822	87340-0821	8.00 (.315)	6.00 (.236)
10	87340-1022	87340-1021	10.00 (.394)	8.00 (.315)
12	87340-1222	87340-1221	12.00 (.472)	10.00 (.394)
14	87340-1422	87340-1421	14.00 (.551)	12.00 (.472)
16	87340-1622	87340-1621	16.00 (.630)	14.00 (.551)
18	87340-1822	87340-1821	18.00 (.709)	16.00 (.630)
20	87340-2022	87340-2021	20.00 (.787)	18.00 (.709)