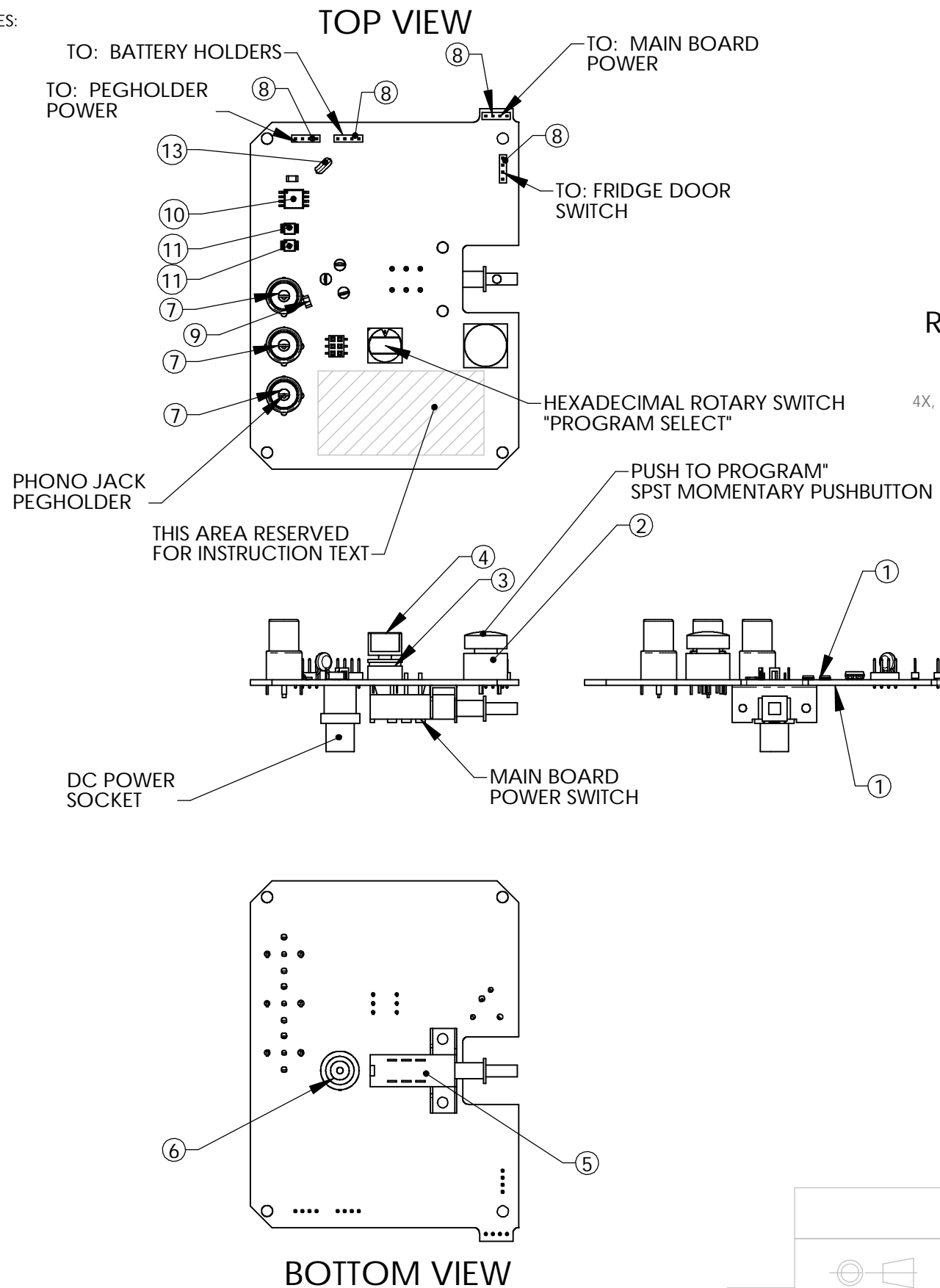
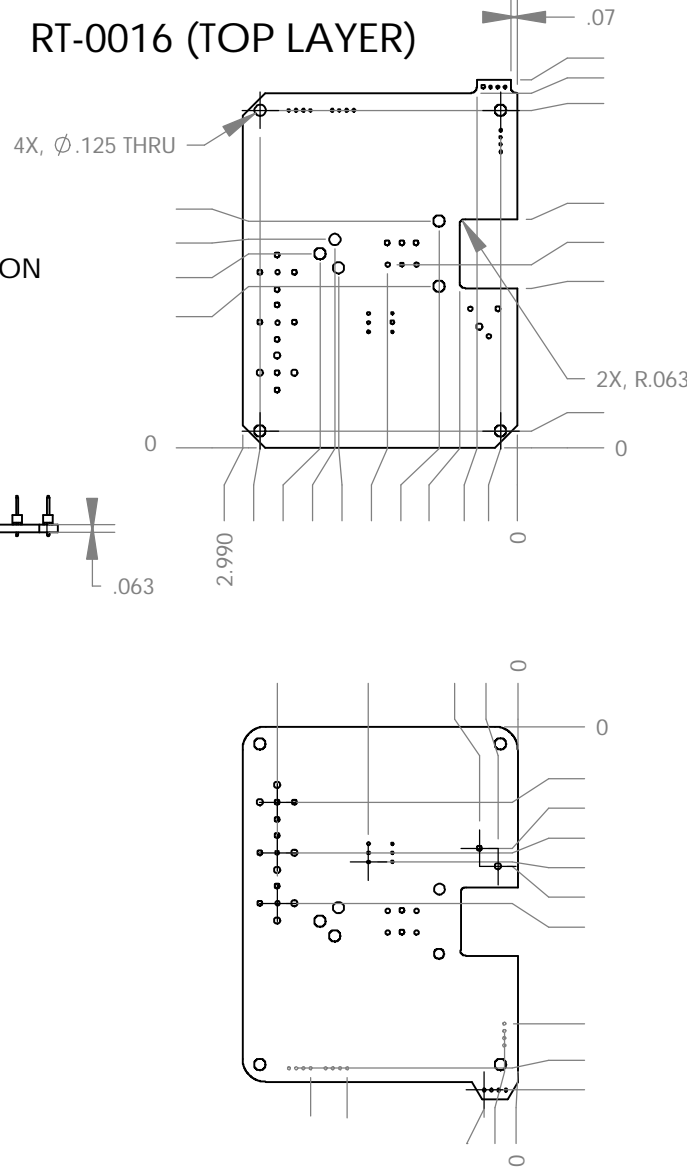


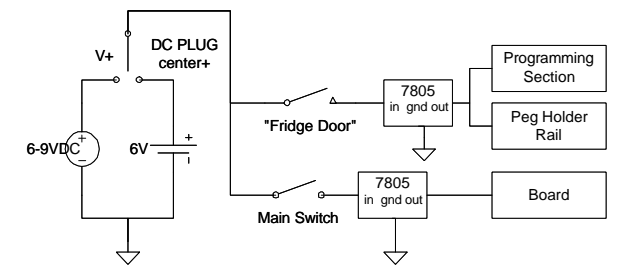
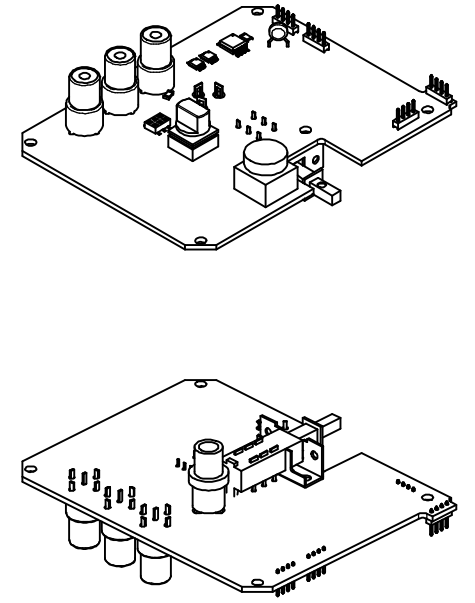
NOTES:



RT-0016 (TOP LAYER)



ITEM NO.	QTY.	PART NO.	DESCRIPTION
1	1	RT-0015X	PCB, PROGRAMMER, TOP
2	1	Digikey_EG1311-ND	SPST MOMENTARY PSHBUTTN
3	1	Grayhill_94HCB16	16 POS ROTARY SWITCH
4	1	Grayhill_947705-001	CAP FOR 16 POS ROTARY SWITCH
5	1	Digikey_EG1010-ND	DPTT POWER SWITCH
6	1	DIGIKEY_SC1151-ND	DC POWER SOCKET
7	3	MOUSER_16PJ092	RCA PHONO JACK
8	4	Sullins_PRPN041PAEN	2MM PITCH, 4PIN HEADER
9	2	1206	0.1uF DECOUPLING TO RESET
10	1	SOIC8_(ATTINY12)	ATMEL ATTINY 12
11	2	MSOP8	ZETEX P-CH FET
12	1	MOLEX_87340-0622	6 PIN MILLIGRID FEM CONN
13	1	CAPACITOR-RADIAL	0.1uF, 50V, 20%, DECOUPLING



<p>THIRD ANGLE PROJECTION</p>	<p>UNLESS OTHERWISE SPECIFIED TOLERANCES ARE:</p> <p>.XX ± .01 SURFACE FINISH: 63</p> <p>.XXX ± .005</p> <p>.XXXX ± .0005</p> <p>ANGLE ± 1°</p> <p>XX.X° ± 0.2°</p>	<p>UNLESS OTHERWISE SPECIFIED:</p> <p>1. ALL DIMENSIONS ARE IN INCHES.</p> <p>2. BREAK AND DEBURR ALL EDGES AND CORNERS (.02 MAX x 45°).</p>	ROUTE	APPV'L	DATE	DWG. NO.: RT-0019	REV X3	ECO#	DATE 04-23-04
			DWN. RED			TITLE: ASY, PCB, PROGRAMMER			
SCALE: N/A	SIZE B	MATERIAL: NA				Red's Toyland			
		FINISH: NA				Mountain View, CA, 94041			
		DESIGNER: RED BYER							